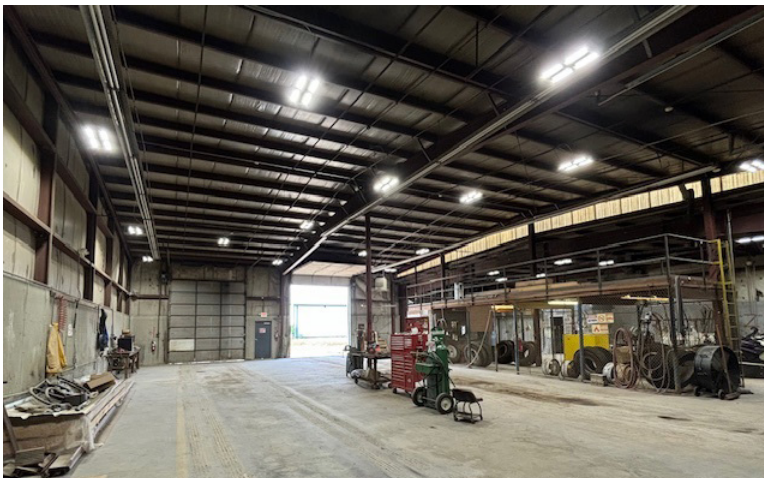


3.18 ACRE INDUSTRIAL PROPERTY FOR SALE



SPACE HIGHLIGHTS

- **3.18 Acres**
- 6,252 SF Building
- Six 14' Drive-In Doors
- 15'-18' Clear Height

CONTACT

JOHN D. COE, SIOR, CCIM
P (816) 701-5064
jcoe@copaken-brooks.com

LISTING INFORMATION

Address:	1400 Benton Street, Sedalia, Missouri, 65301
Pricing:	\$499,000
Lot Size:	3.18 AC
Building SF:	6,252 SF
Office SF:	252 SF
Drive-In Doors:	Six 14' Doors
Clear Height:	15'-18'
Class:	Class B
Construction:	Metal Frame
Roof:	Metal
HVAC:	Heating units in warehouse
Highway Access:	Highway 65
Power:	400 Amp, Three phase
Parcel ID:	108033313011003

