

MULTI-STORY WAREHOUSE FOR SALE



BUILDING HIGHLIGHTS

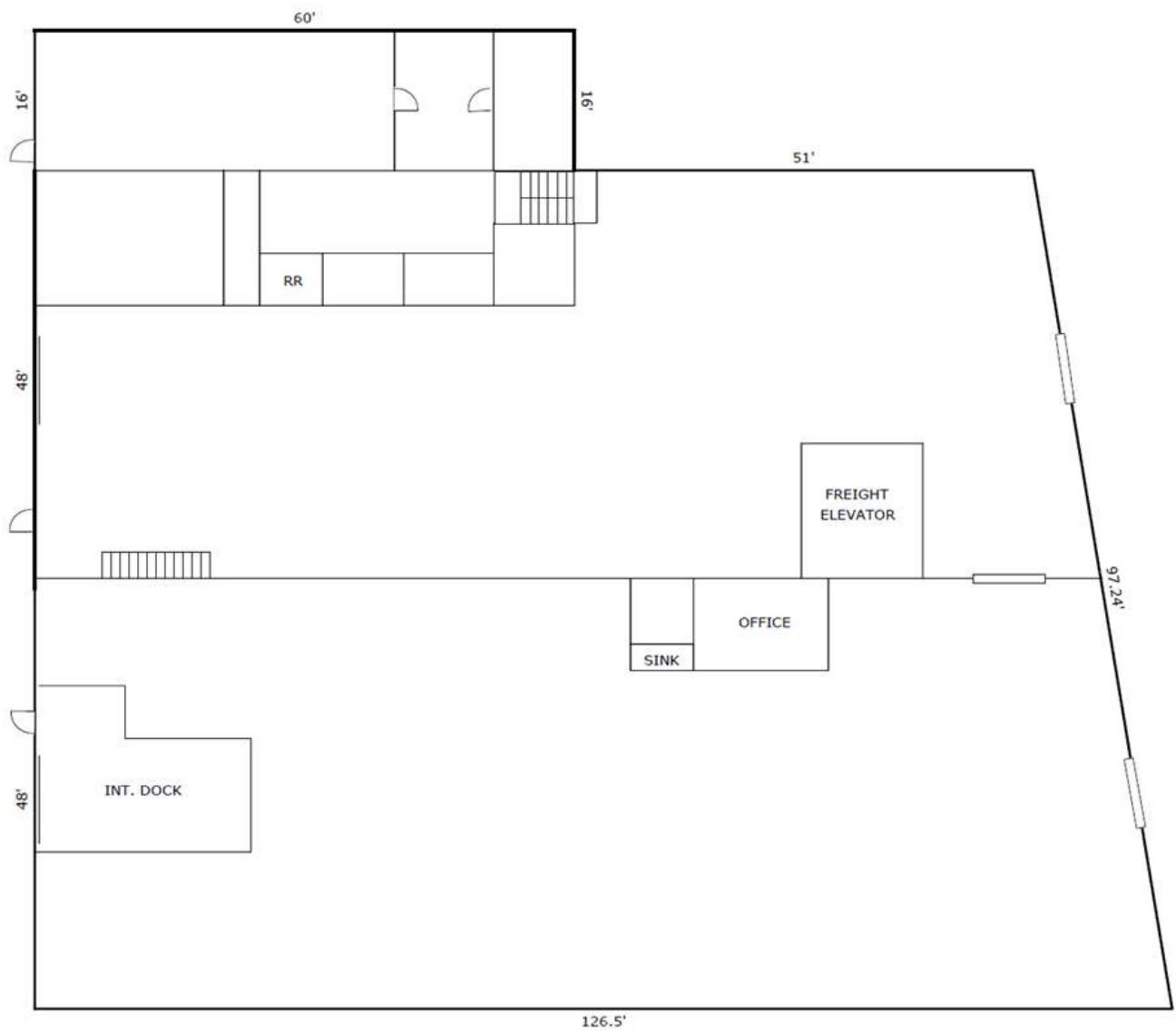
- **28,902 SF (Above Ground)**
- **\$1,299,000 Price**
- Convenient access to I-35, I-70 and I-670
- Great central location, moments from Downtown
- Excellent visibility from I-70 and I-35 (90,000 VPD)
- An opportunity to be a part of the revitalization of the Historic West Bottoms neighborhood

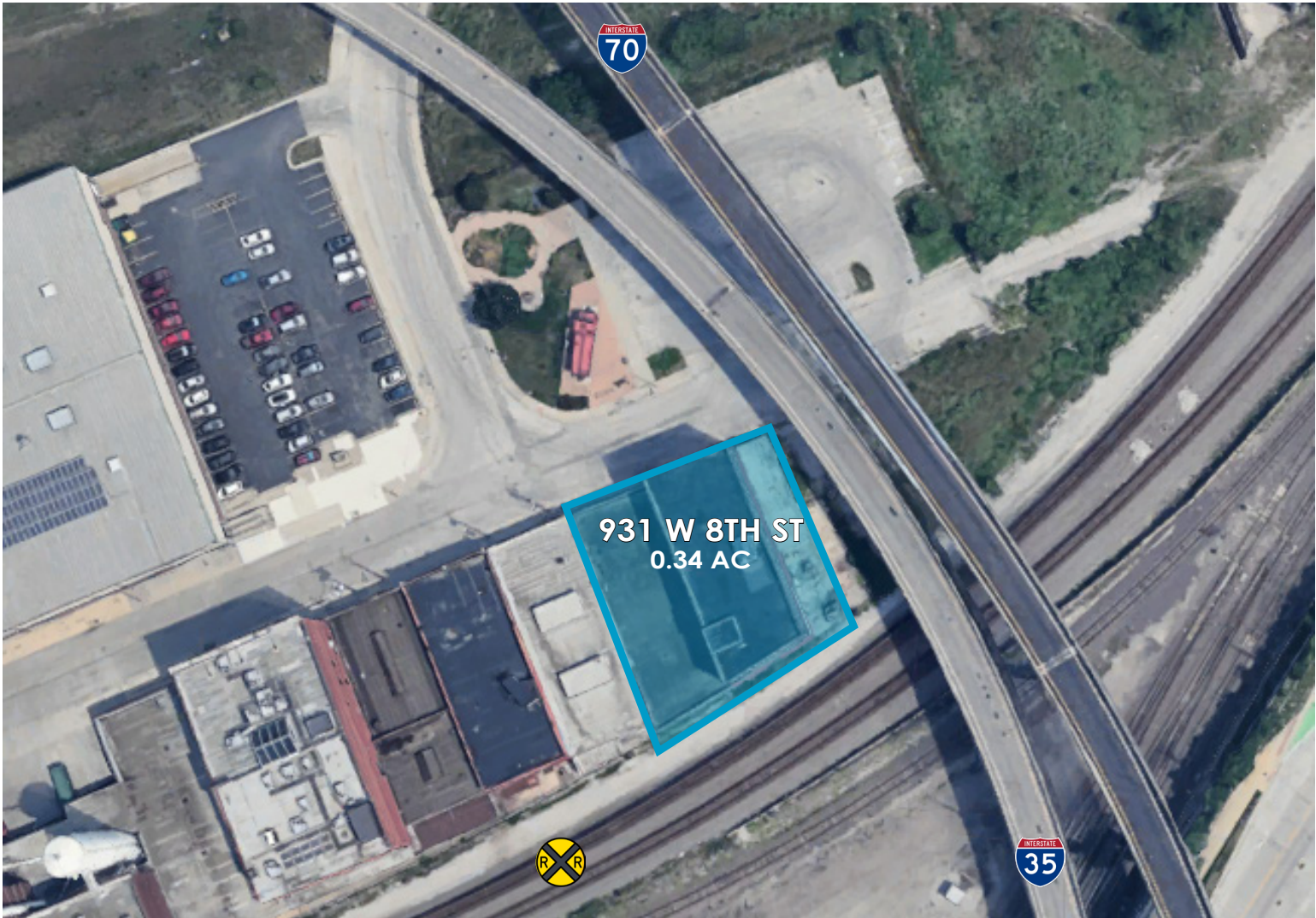
SALE CONTACT

JOHN D. COE, SIOR, CCIM
P (816) 701-5064
jcoe@copaken-brooks.com

LISTING INFORMATION

Address:	931 W 8th St, Kansas City, MO 64101
Pricing:	\$1,299,000
Lot Size:	0.5 Acres +/-
Building SF:	28,902
Office SF:	1,000 SF +/-
Warehouse SF:	28,000 SF +/-
Stories:	4 Stories
Dock Doors:	2 Dock High Doors 2 Rail Doors 1 (14' x 12') Drive In Doors
Clear Height:	10' 10" - 13'
Construction:	Brick with concrete and wood supports
Roof:	TPO
Power:	400 Amp, 200 Volt, 3 phase
Sprinklers:	Wet System
Parking:	Public Street Parking
Signage:	Signage available on building with excellent Highway visibility
Highway Access:	I-35, I-70, I-670
Zoning:	M3-5, Manufacturing 3 District (w/Intensity Designator of 5)
Parcel ID:	29-310-15-10
Class:	C
Year Built:	1928
Utilities	All utilities are available





MULTI-STORY WAREHOUSE FOR SALE



SALE CONTACT

JOHN D. COE, SIOR, CCIM
P (816) 701-5064
jcoe@copaken-brooks.com

All information furnished regarding property for sale or lease is from sources deemed reliable, but no warranty or representation is made as to the accuracy thereof and the same is subject to errors, omissions, changes of prices, rental or other conditions, prior sale or lease, or withdrawal without notice.