

PREMIER OFFICE AND INDUSTRIAL SPACE FOR LEASE



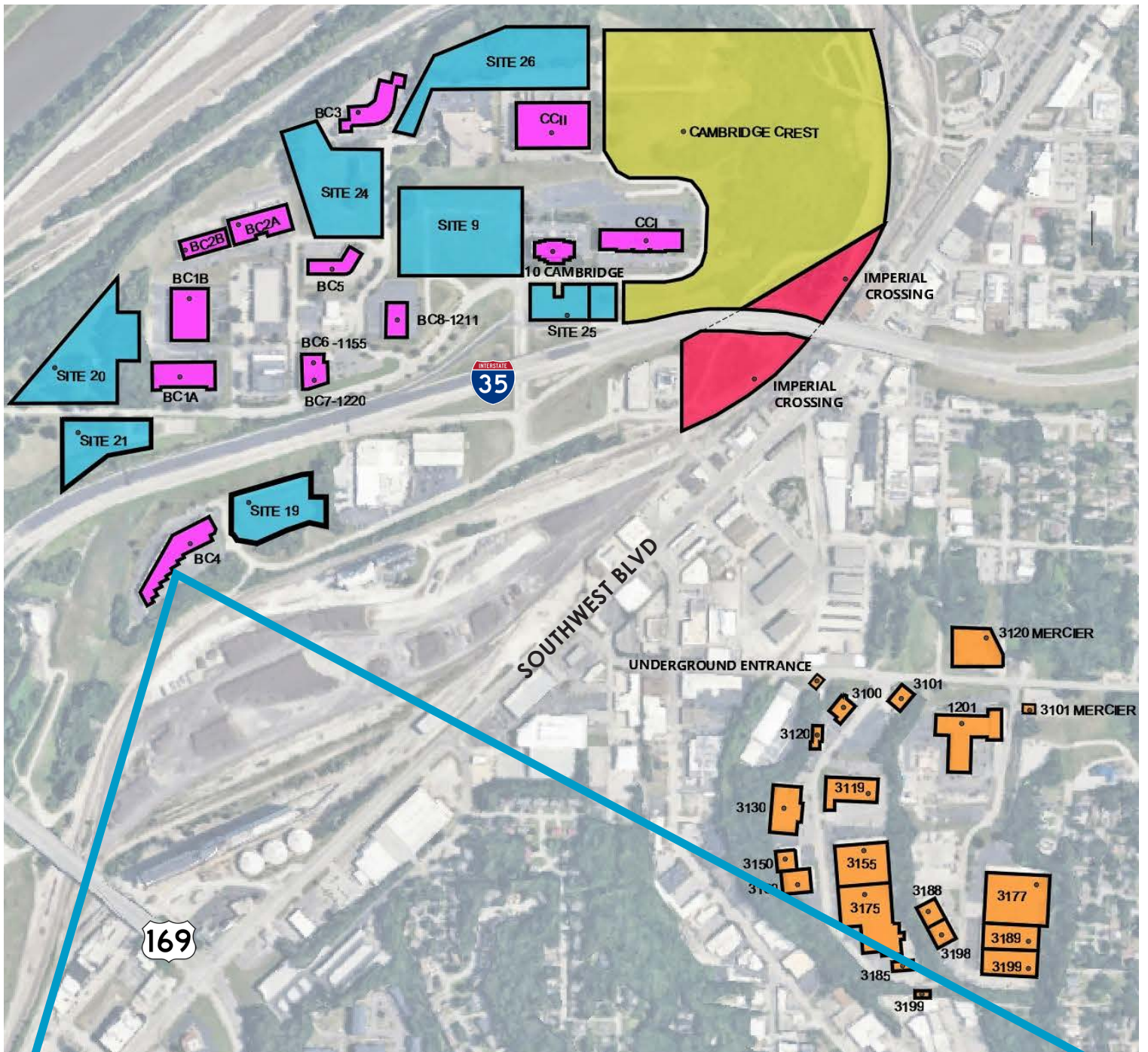
SPACE HIGHLIGHTS

- **3,050 - 3,161 SF Available**
- **Free, Convenient On-Site Parking**
- Positioned in a **well-maintained** and **secured** business park setting
- Accommodates large and small businesses
- Appropriate for light manufacturing, showroom and warehouse/flex applications
- Prominent I-35 Building Signage
- **Clear visibility** and **instant accessibility** to I-35
- **Great location** central to the city's major thoroughfares; moments from the Plaza, Crown Center, Westport and Downtown

LEASING CONTACT

MOLLY CRAWFORD MUNNINGHOFF
P (816) 701-5013
mccrawford@copaken-brooks.com

LOCATION



1302 ADAMS ST

BUSINESS CENTER 4

Total SF Available **3,161 SF**

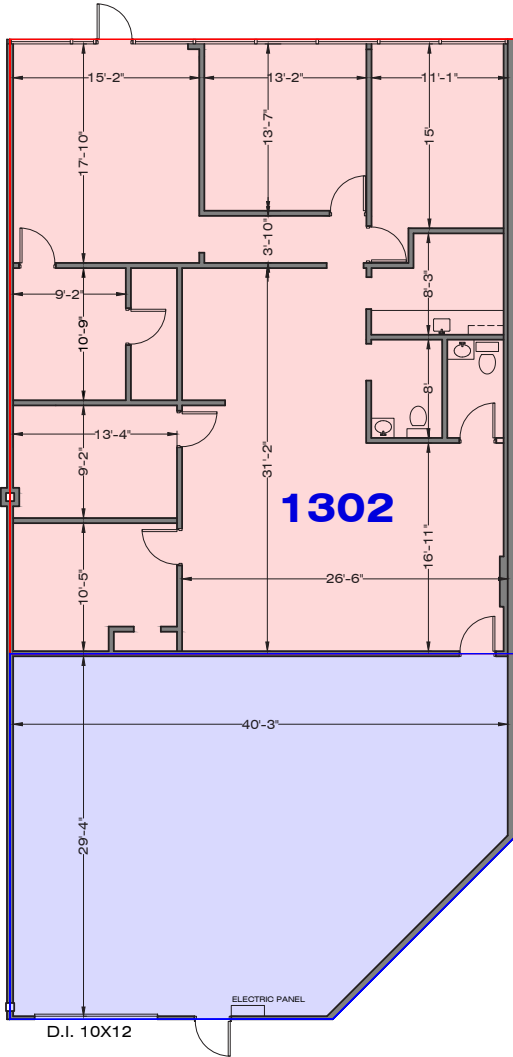
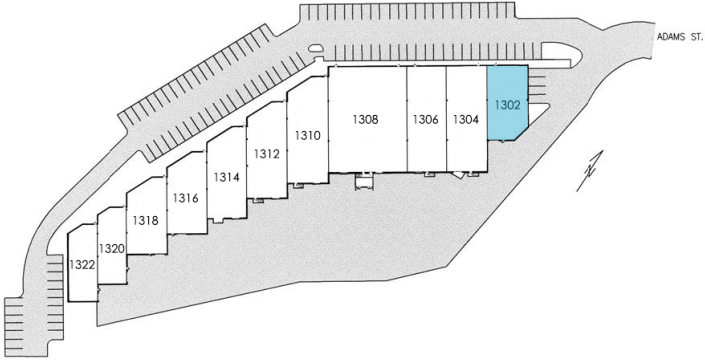
Office SF **2,049 SF**

Warehouse SF **1,112 SF**

Drive-In Doors **1 (10' x 12')**

Clear Height **16'**

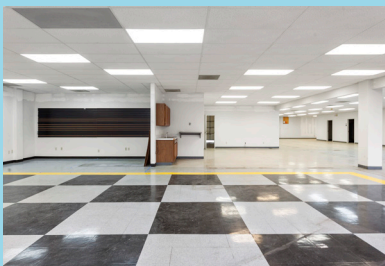
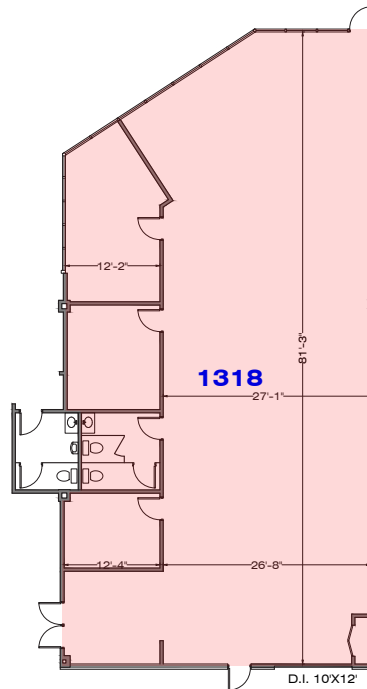
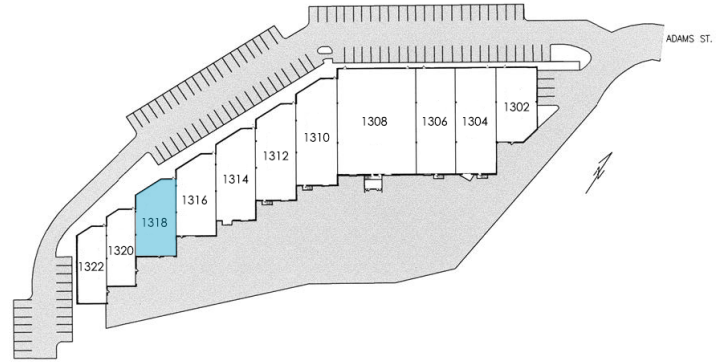
Notes **Highway Visibility**



1318 ADAMS ST

BUSINESS CENTER 4

Total SF Available	3,050 SF
Office SF	3,050 SF
Warehouse SF	0 SF
Drive-In Doors	1 (10' x 12')
Clear Height	16'
Notes	Highway Visibility





PREMIER OFFICE AND INDUSTRIAL SPACE FOR LEASE



LEASING CONTACT

MOLLY CRAWFORD MUNNINGHOFF

P (816) 701-5013

mcrawford@copaken-brooks.com

All information furnished regarding property for sale or lease is from sources deemed reliable, but no warranty or representation is made as to the accuracy thereof and the same is subject to errors, omissions, changes of prices, rental or other conditions, prior sale or lease, or withdrawal without notice.